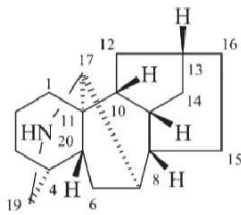


## ZAŁĄCZNIK 3

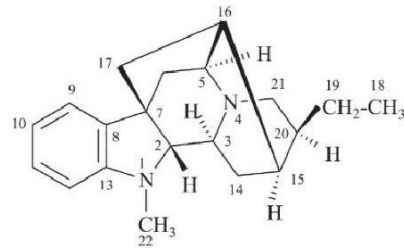
Struktury alkaloidów, steroidów, terpenoidów i podobnych związków wymienionych w Tabeli 10.1, P-101.2.7 i Rozdziale 10

Struktury oznaczone dwoma gwiazdkami \*\* w CAS nazywa się systematycznie.

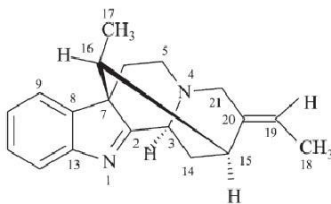
### 1. Alkaloidy



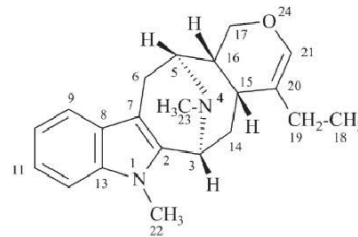
akonitan



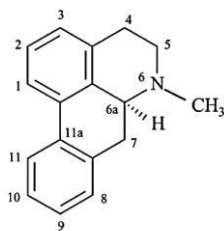
ajmalan



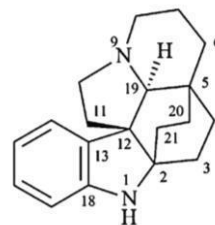
akuamilan\*\*



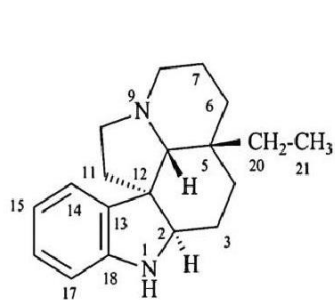
alstofilan\*\*



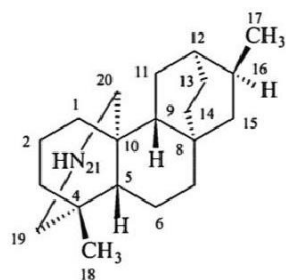
aporfina\*\*



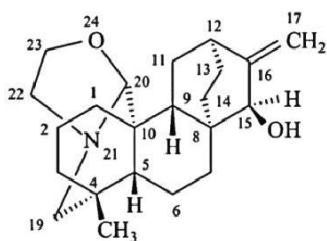
aspidofraktynina\*\*



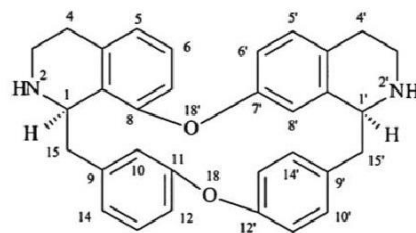
aspidospermidyna



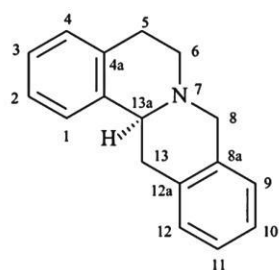
atydan\*\*††



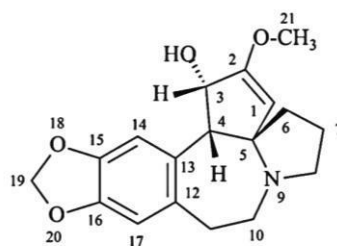
atyzyna\*\*



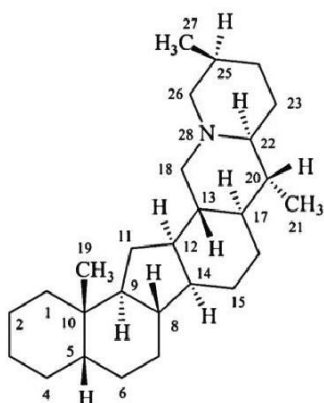
berbaman\*\*



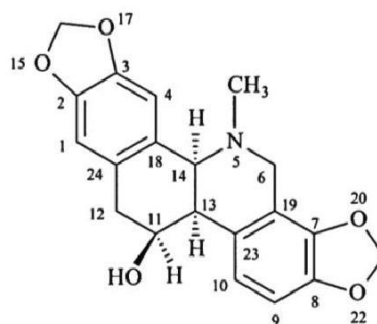
berbina\*\*



cefalotaksyna

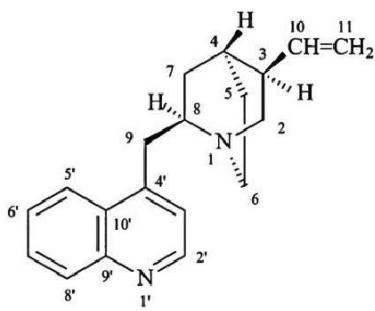


kewan

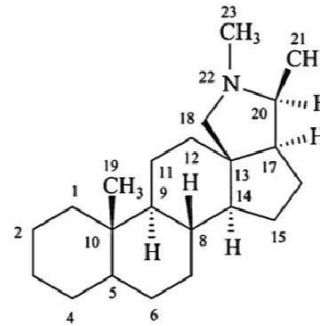


chelidonina\*\*

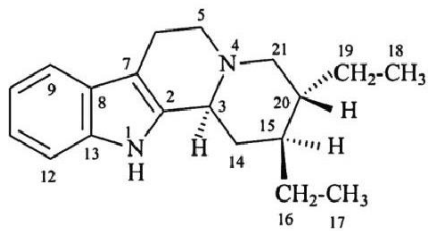
††Ta struktura jest poprawioną strukturą zamieszczoną w Revised Section F: Natural Products and Related Compounds (IUPAC: Recommendations 1999), *Pure and Appl. Chem.*, **71**, 587–643 (1999), w której brak było grupy 4β-metylowej.



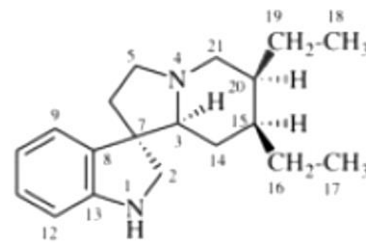
cynchonane\*\*



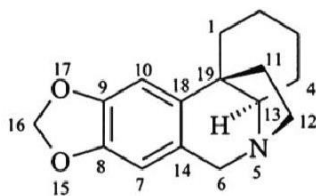
konanina



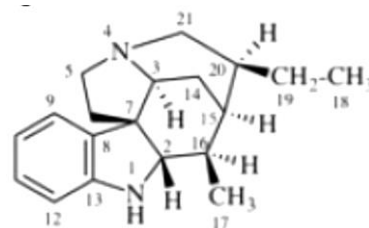
korynan\*\*



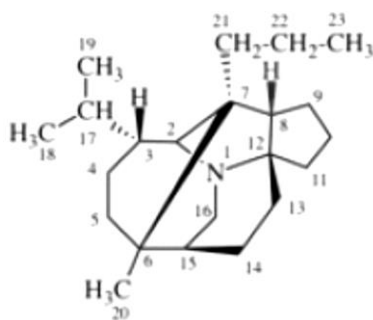
korynoksan\*\*



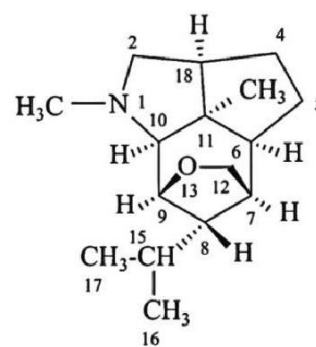
krynan\*\*



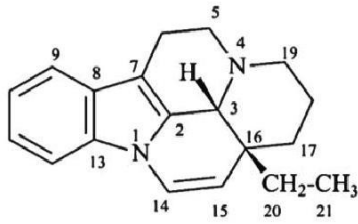
kuran



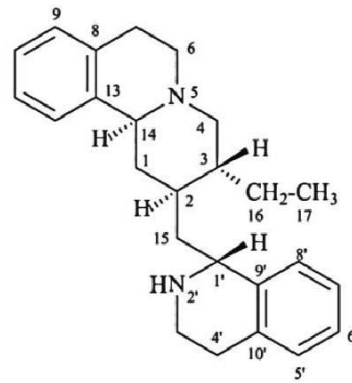
dafnan\*\*



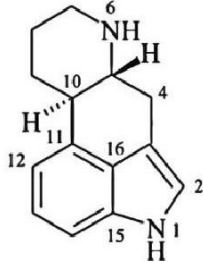
dendroban\*\*



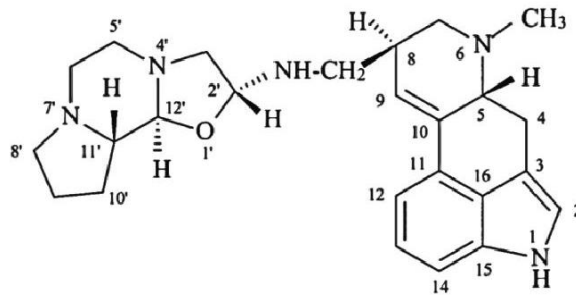
eburnamenina



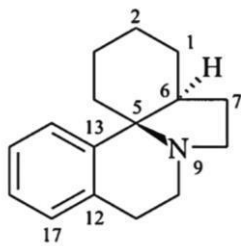
emeta



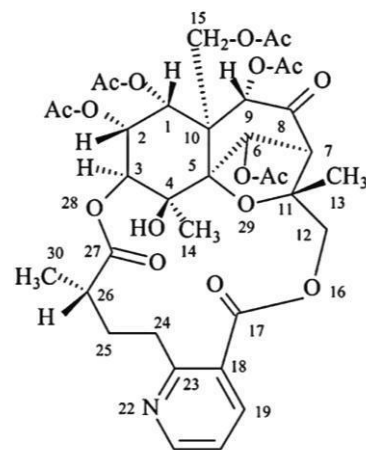
ergolina



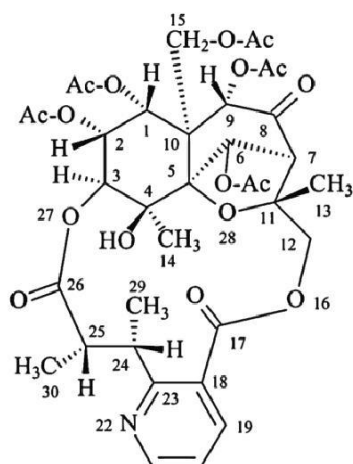
ergotaman



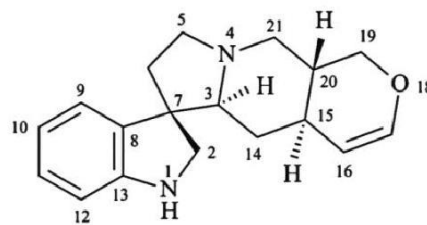
erytrynan



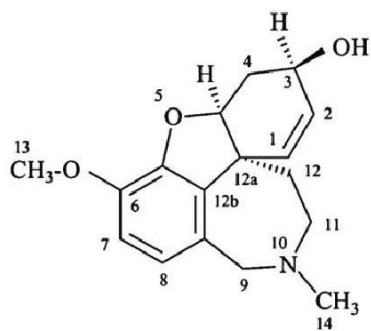
ewonimina\*\*



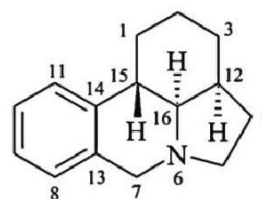
ewonina\*\*



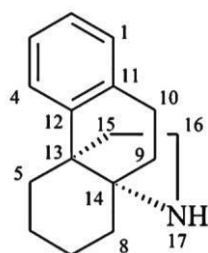
formozanan\*\*



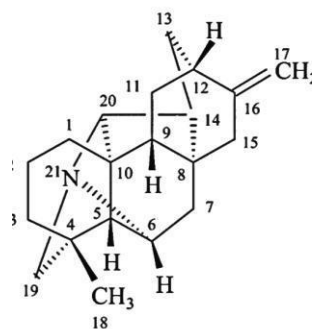
galantamina\*\*



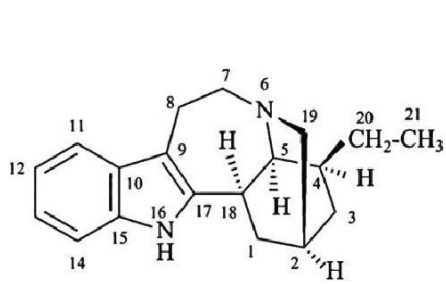
galantan\*\*



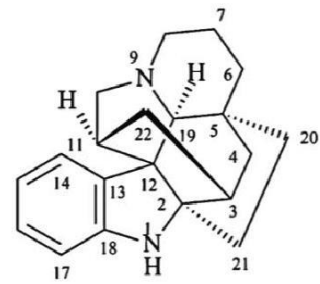
hasubanan



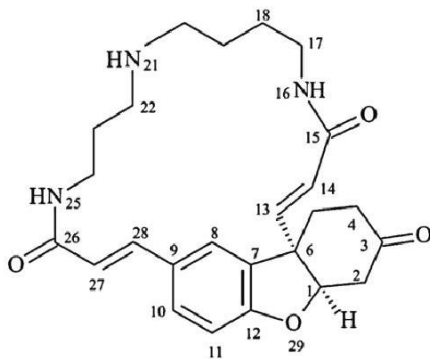
hetyzan



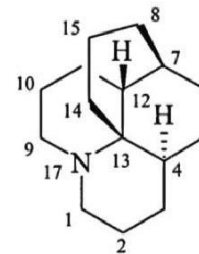
ibogamina



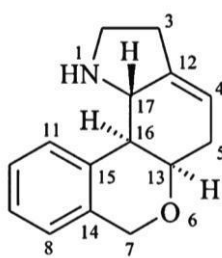
kopsan\*\*



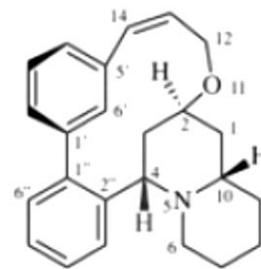
lunaryna\*\*



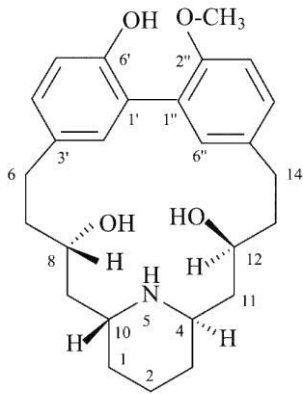
likopodan\*\*



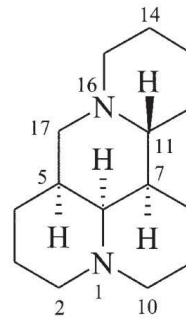
likorenan\*\*



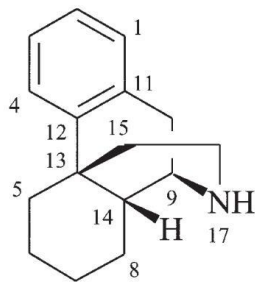
litran\*\*



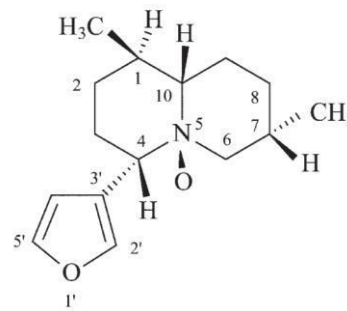
litranidyna\*\*



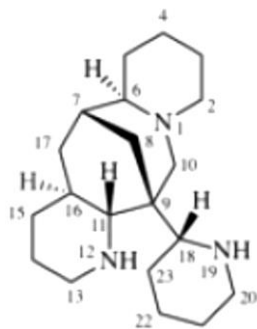
matrydyna\*\*



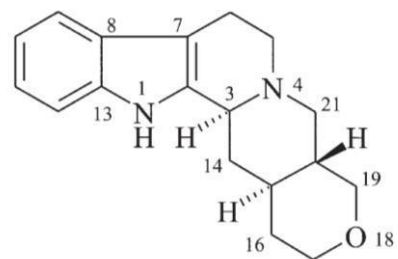
morfinan



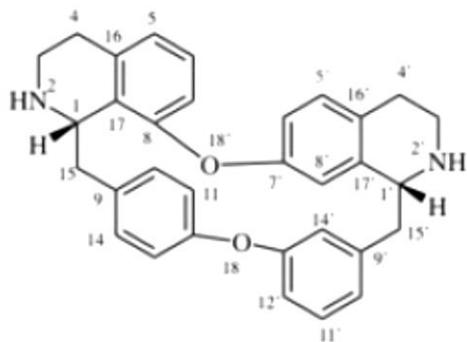
nutarydyna^^



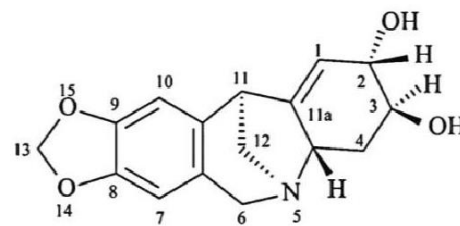
ormosanina\*\*



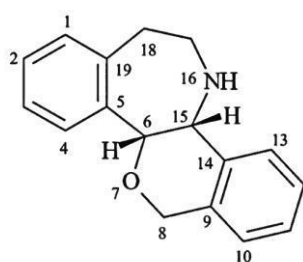
18-oksajohimban



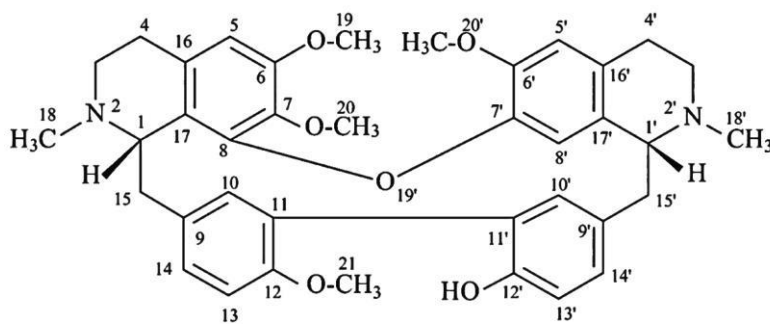
oksyakantan\*\*



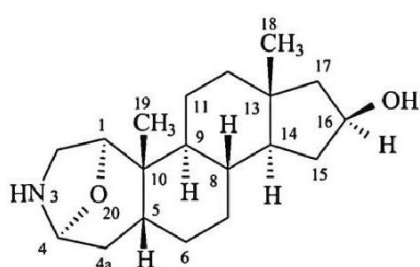
pankracyna\*\*



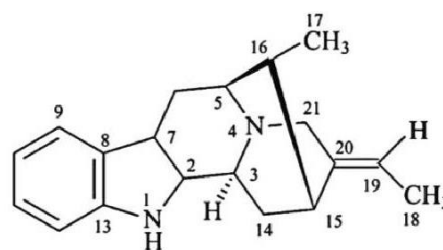
readan\*\*



rodiazyna\*\*

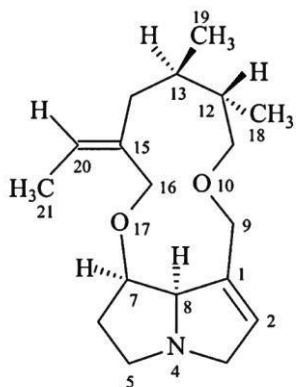


samandaryna\*\*

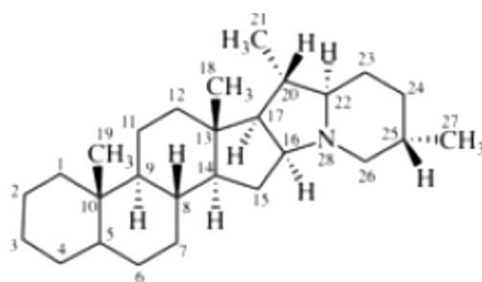


sarpagan

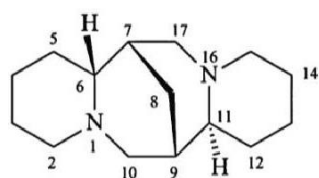




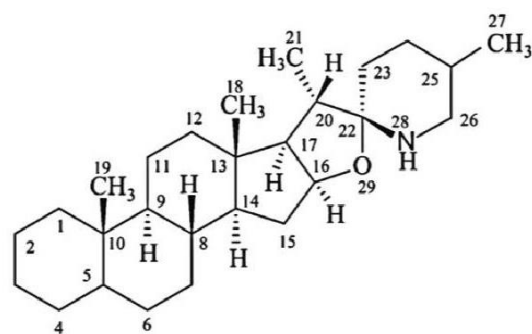
senecjonan\*\*



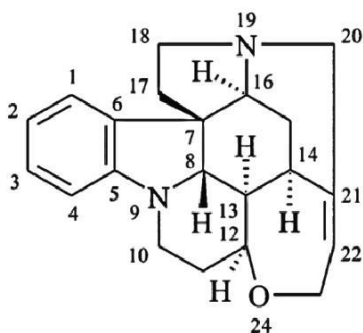
solanidan



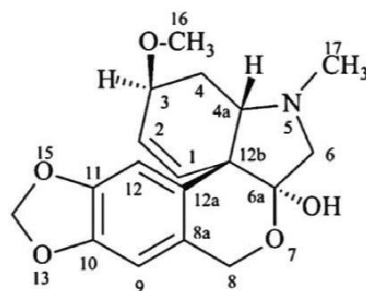
sparteina\*\*



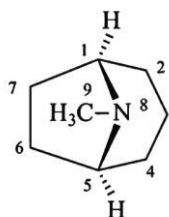
spirosolan††



strychnidyna

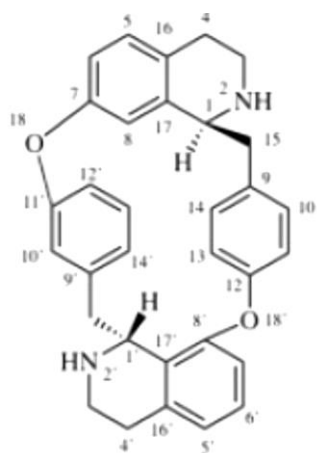


tazetyna\*\*

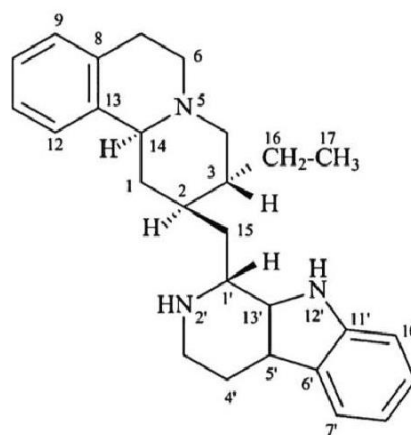


tropan\*\*

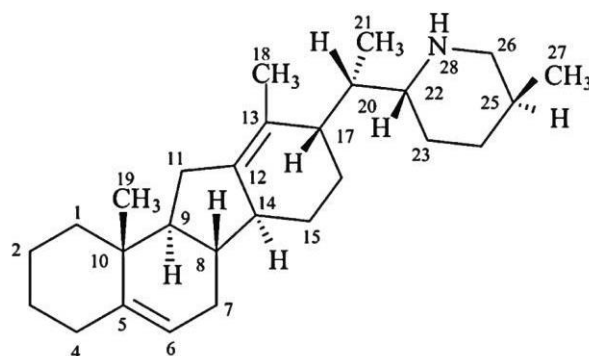
†† Dla tej struktury nazwa CAS wymaga określenia chiralności w pozycji C-22



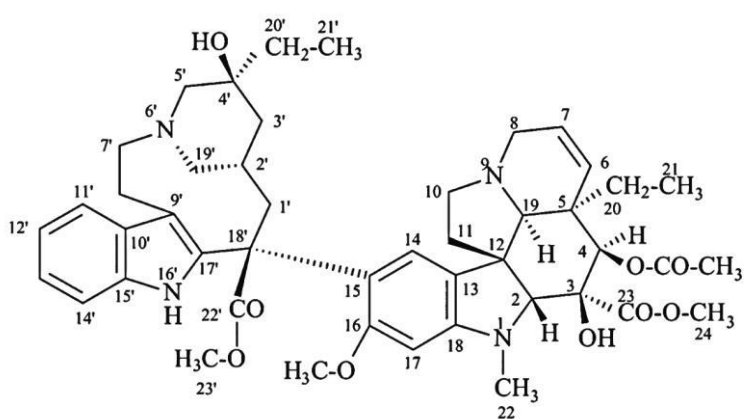
tubokuraran\*\*



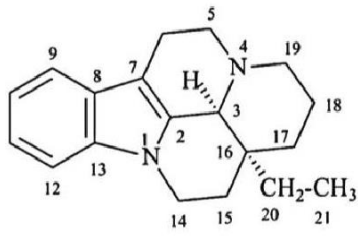
tubulozan\*\*



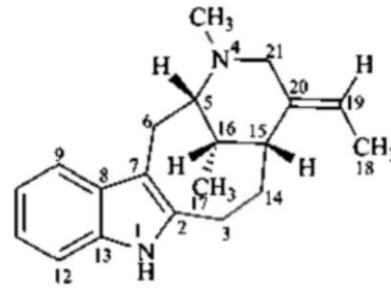
weratraman



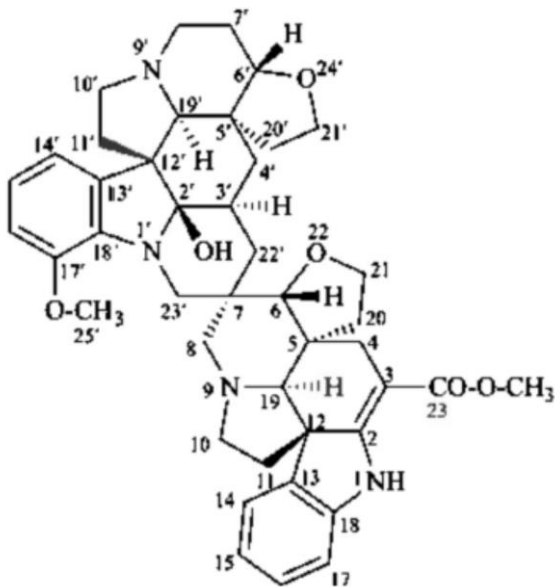
winkaleukoblastyna



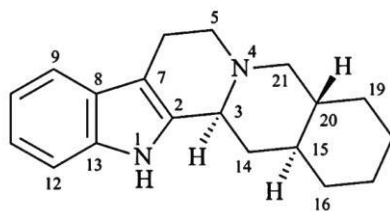
winkan\*\*



wobazan

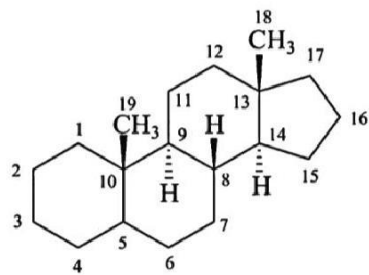


wobtuzyzna \*\*

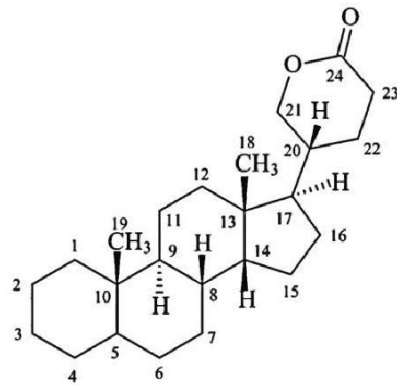


johimban

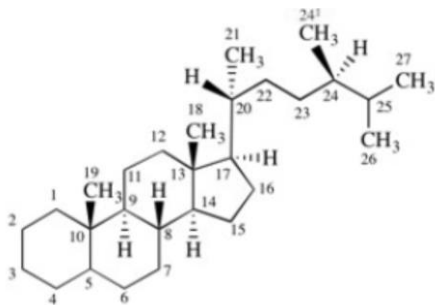
## 2. Steroidy



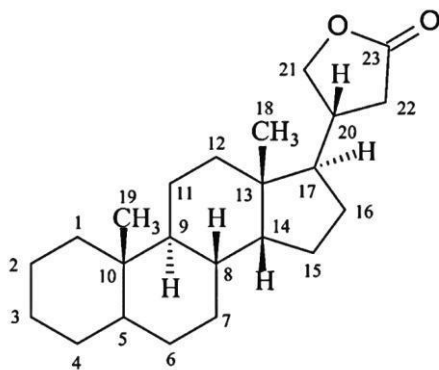
androstan



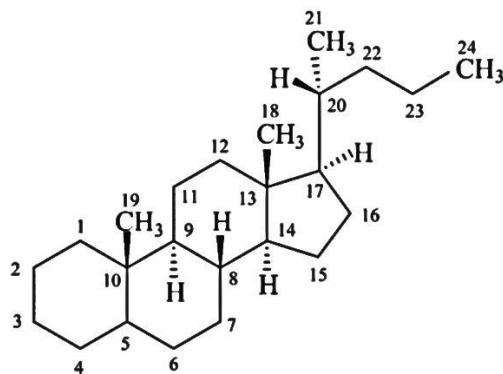
bufanolid



kampestan††

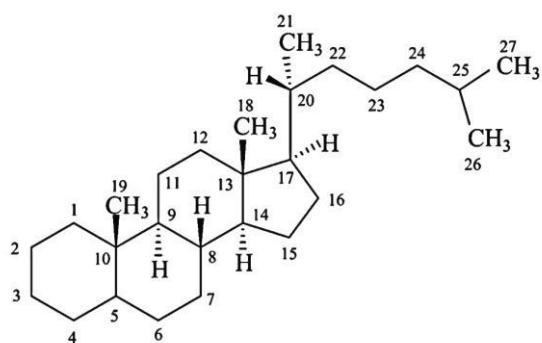


kardanolid\*\*

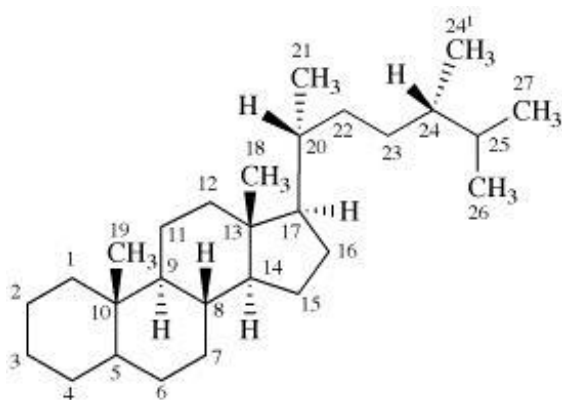


cholan

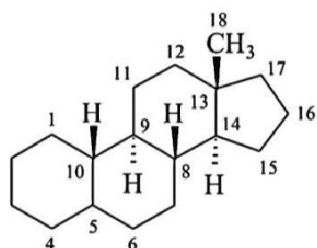
†† Ta macierzysta struktura w CAS nazywa się jako stereoizomer ergostanu, w którym lokant 24<sup>1</sup> jest 28.



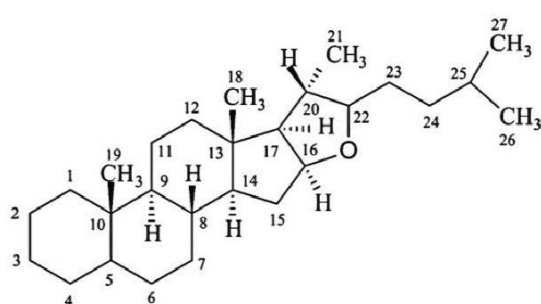
cholestan



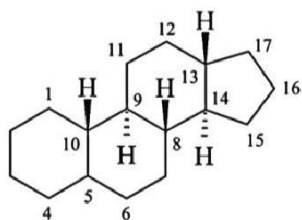
ergosan



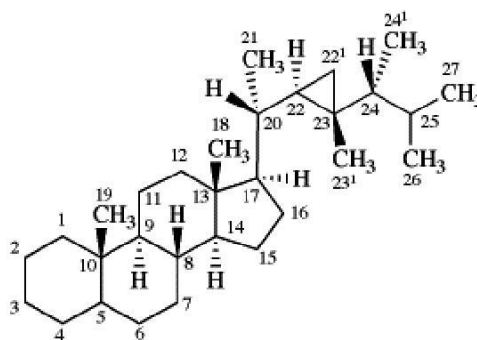
estran



furostan

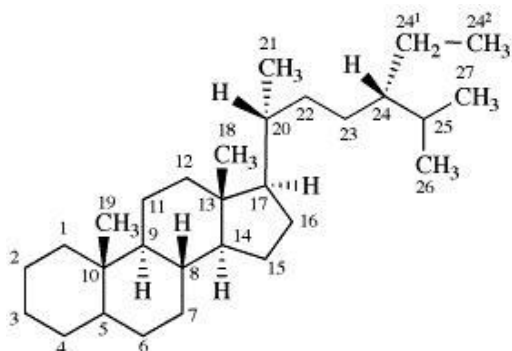


gonan

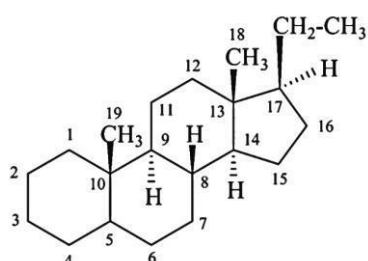


gorgostan\*

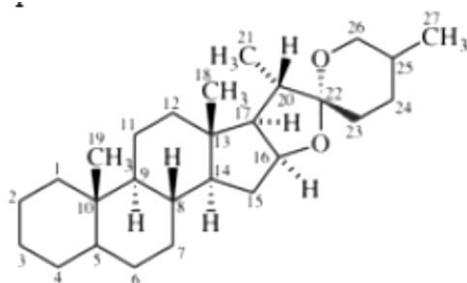
\* W CAS lokanty 22<sup>1</sup>, 23<sup>1</sup> i 24<sup>1</sup> są, odpowiednio 34, 33, i 28.



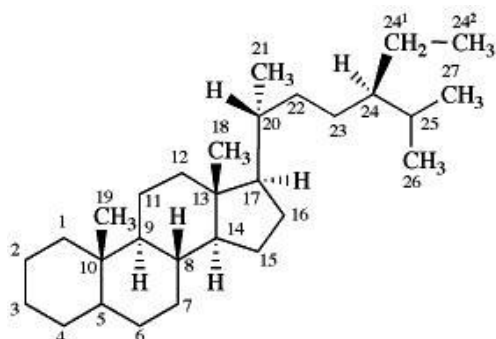
poryferastan††



pregnan



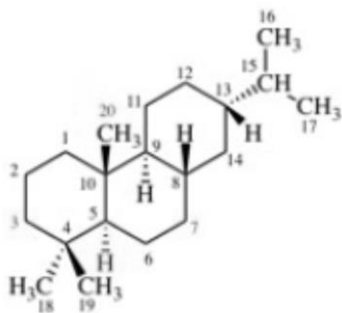
spirostan



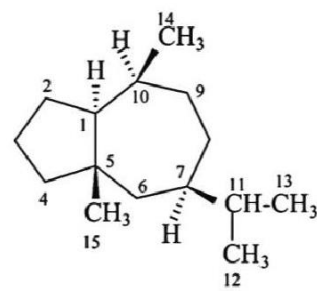
stigmastan

†† Ta macierzysta struktura w CAS nazywa się jako stereoizomer stigmastanu, w którym lokanty 24<sup>1</sup> i 24<sup>2</sup> są odpowiednio 28 i 29.

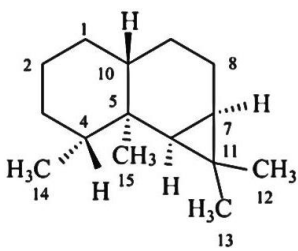
## 3. Terpenoidy



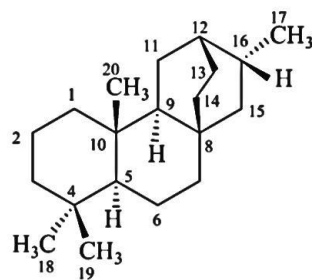
abietan\*\*



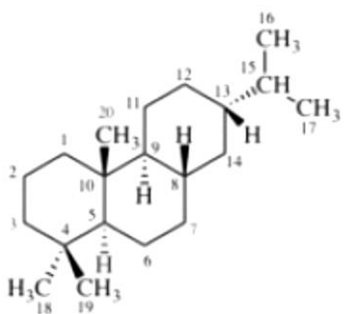
ambrozan\*\*



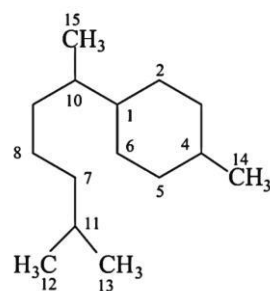
arystolan



atyzan



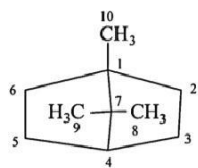
bejeran††



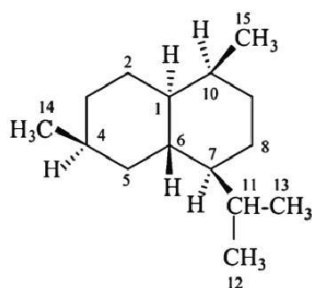
bisabolan\*\*

---

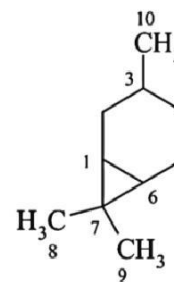
†† Dla tej struktury nazwa CAS wywodzi się z kauranu



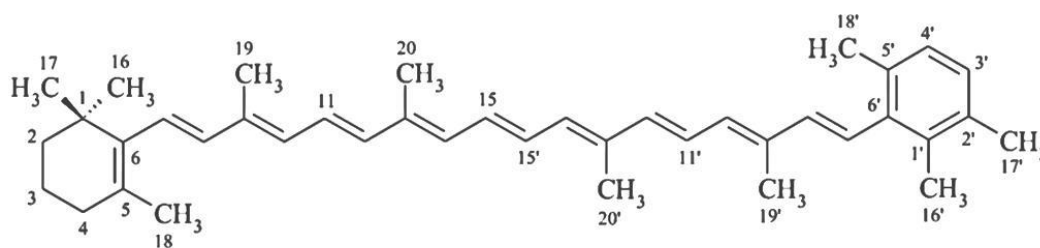
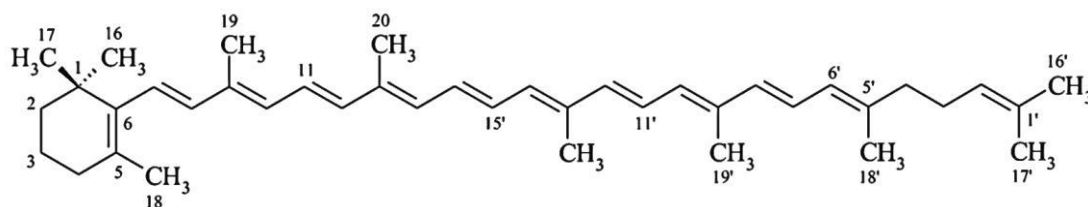
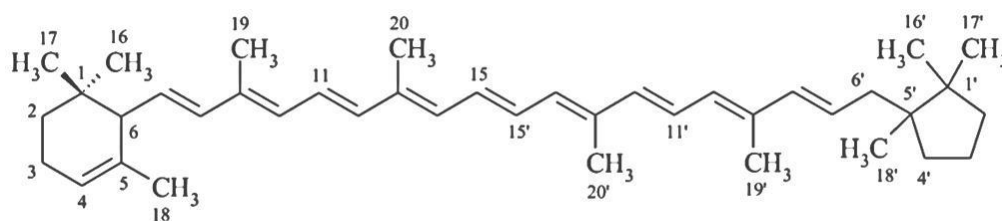
bornan\*\*



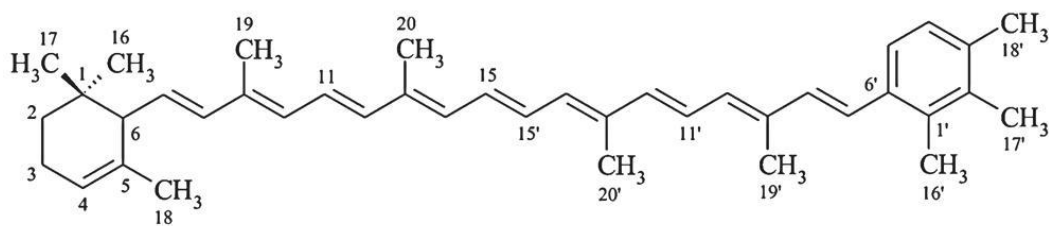
kadinan\*\*



karan\*\*

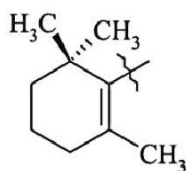
 $\beta,\phi$ -karoten $\beta,\psi$ -karoten $\epsilon,\kappa$ -karoten



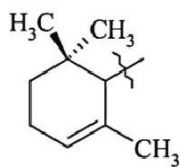


ε,γ-karoten

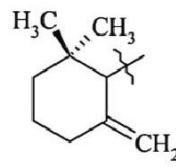
**Uwaga:** Możliwych jest 28 macierzystych struktur karotenu. Cztery z nich pokazano powyżej. 28 struktur powstaje w wyniku wszystkich permutacji siedmiu, pokazanych poniżej, grup końcowych.



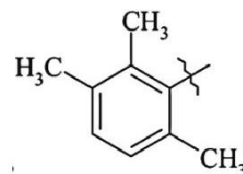
β (beta)



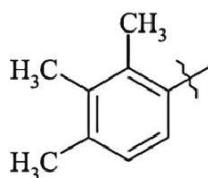
ε (epsilon)



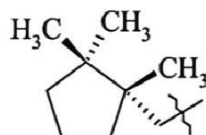
γ (gamma)



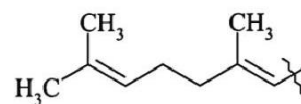
φ (phi)



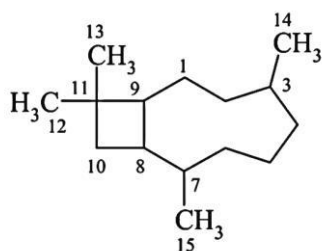
χ (chi)



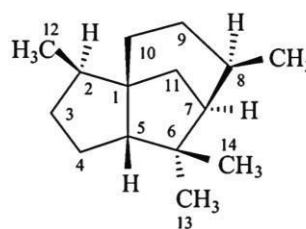
κ (kappa)



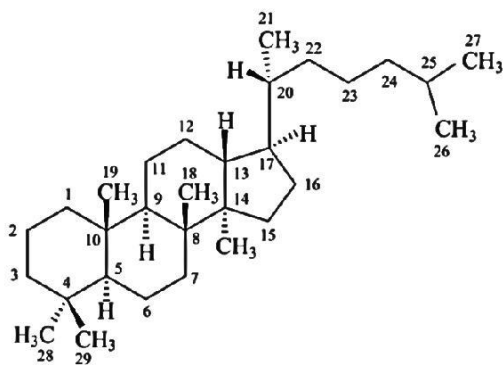
ψ (psi)



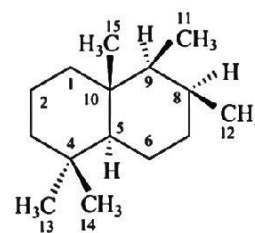
kariofilan\*\*



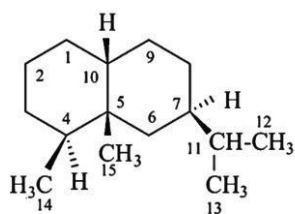
cedran\*\*



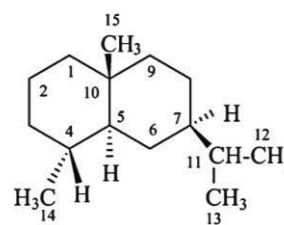
dammaran



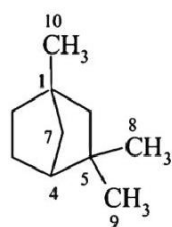
dryman\*\*



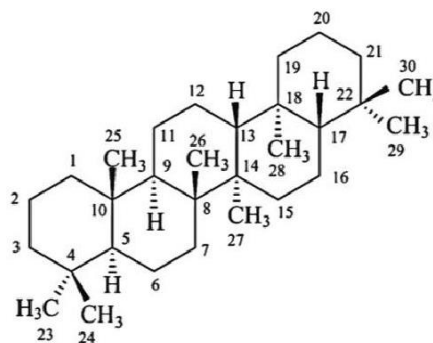
eremofilan\*\*



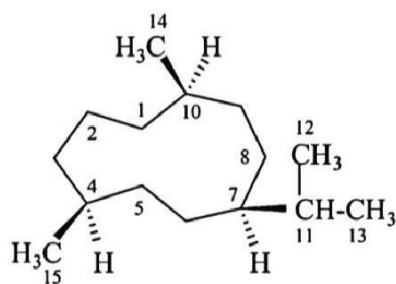
eudesman\*\*



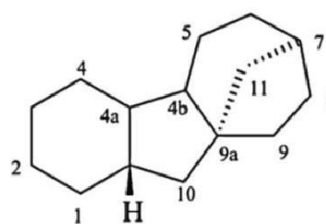
fenchan\*\*



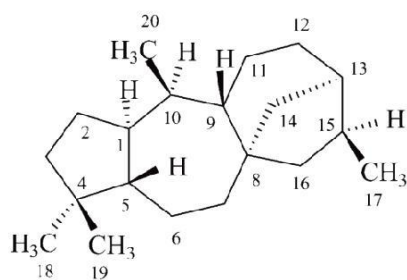
gammakeran



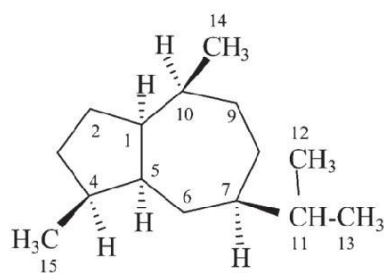
germakran\*\*



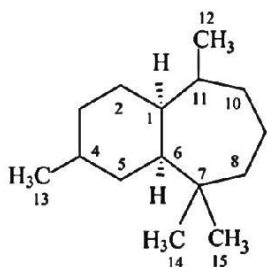
giban



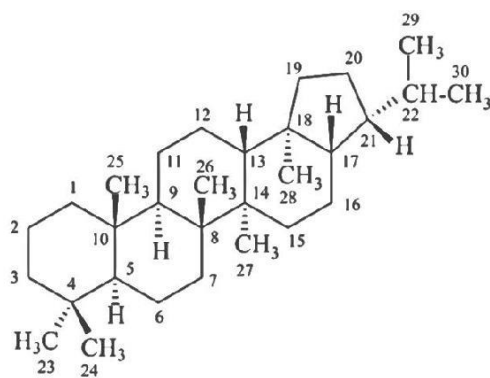
grajanotoksan



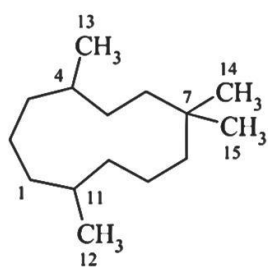
guajan\*\*



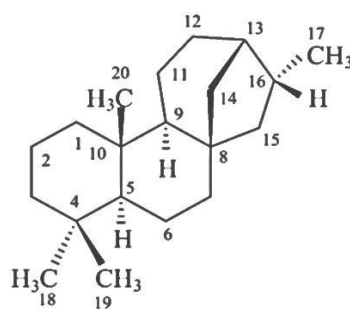
himachalan\*\*



hopan††



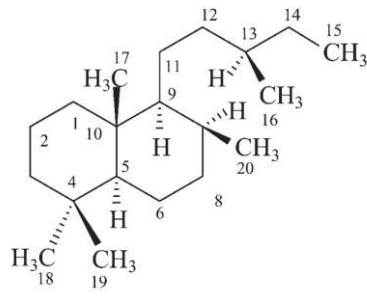
humulan\*\*



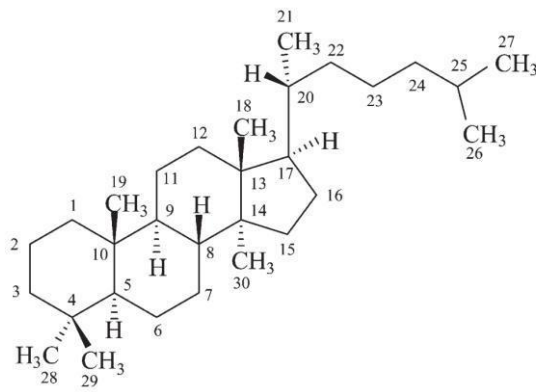
kauran‡

†† Nazwa tych struktur w CAS opiera się na gammakeranie

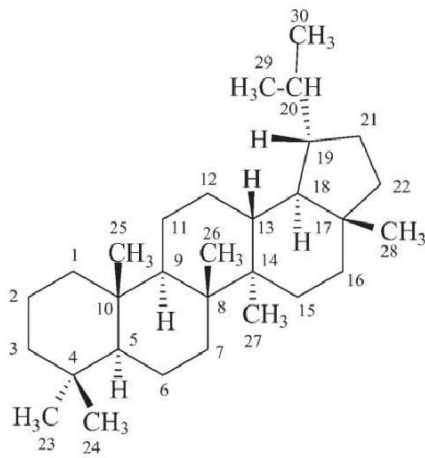
‡ Nazwą tej struktury w CAS jest *ent*-stereoizomer



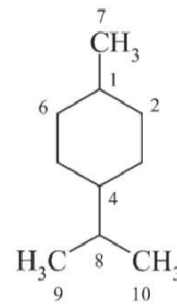
labdan\*\*

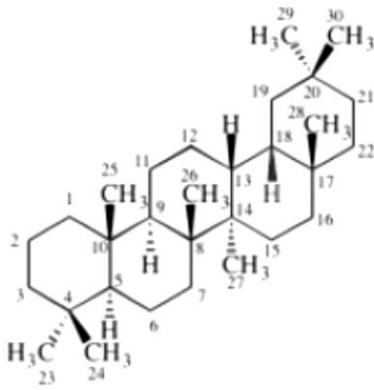


lanostan

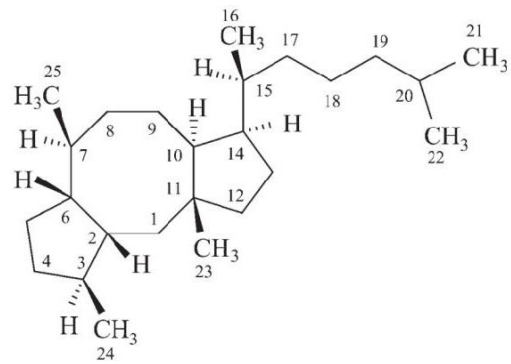


lupan

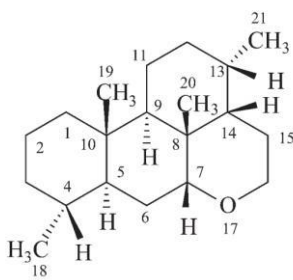
*p*-mentan\*\*



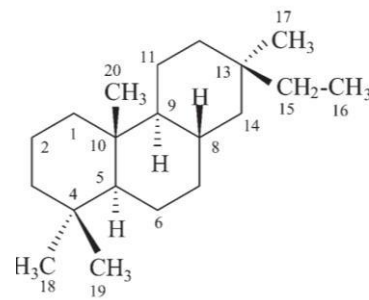
oleanan



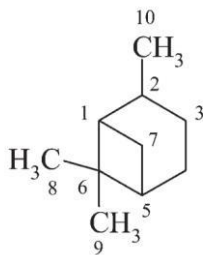
ofiobolan\*\*



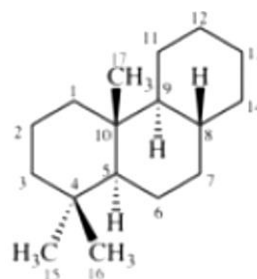
pikrasan



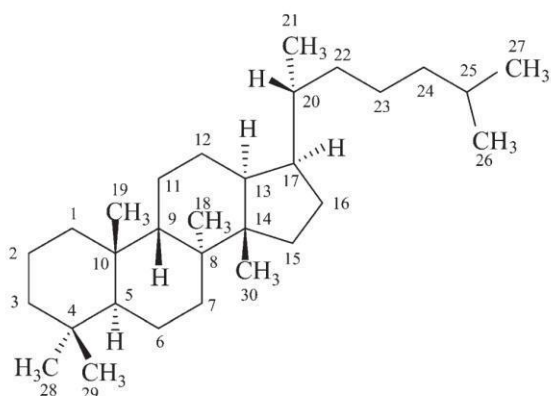
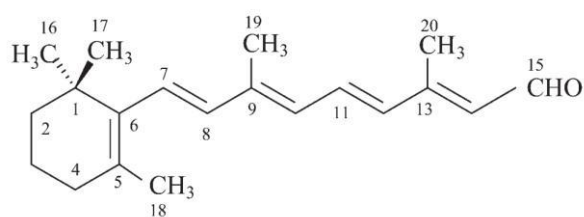
pimaran\*\*



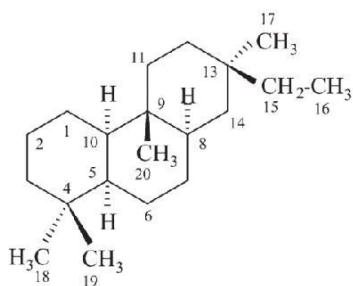
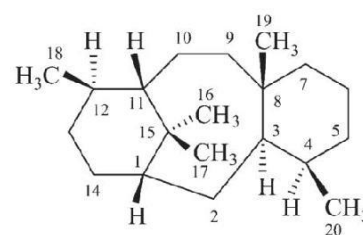
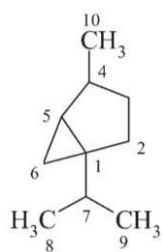
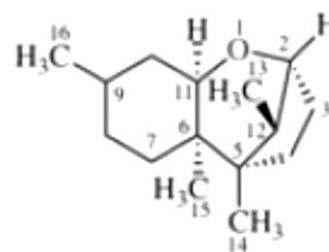
pinan\*\*



podokarpan\*\*

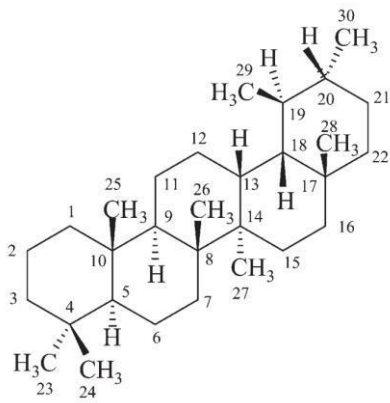
protostan<sup>††</sup>

retinal

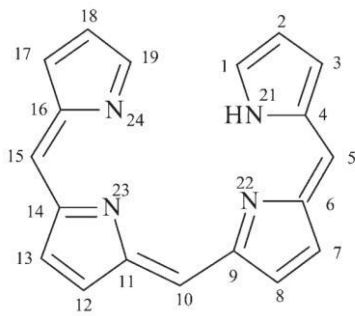
rozan<sup>\*\*</sup>taksan<sup>\*\*</sup>tujan<sup>\*\*</sup>

trychotekan

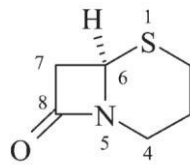
<sup>††</sup>Ta struktura w CAS jest nazywana jako stereoizomer damaranu



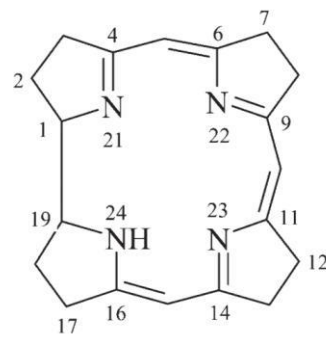
ursan



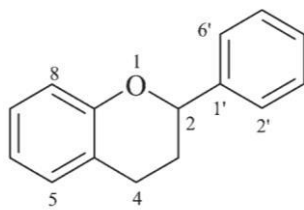
21H-bilin



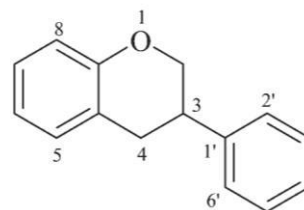
cefam\*\*



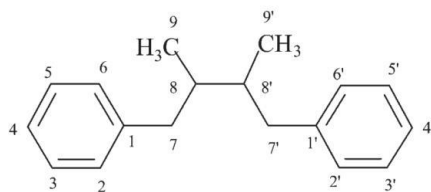
korryn



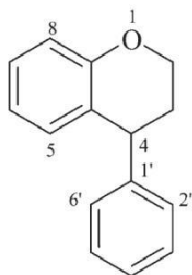
flawan\*\*



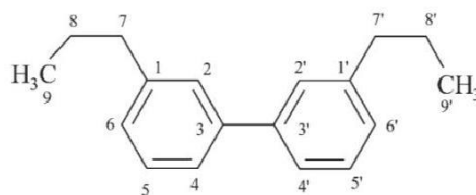
izoflawn\*\*



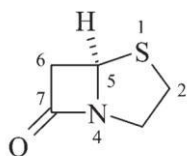
lignan  
[wyłącznie z wiązaniem 8,8' ( $\beta,\beta'$ )]



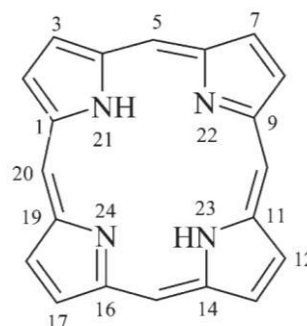
neoflavan\*\*



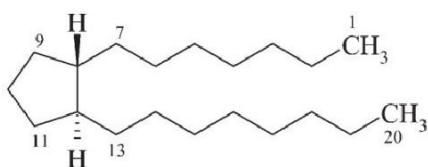
3,3'-neolignan  
[i inne struktury nie połączone wiązaniem 8,8' ( $\beta,\beta'$ )]



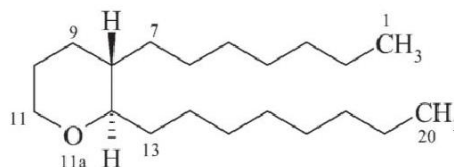
penam\*\*



porfiryna<sup>††</sup>



prostan



tromboksan\*\*

<sup>††</sup>Tę strukturę w CAS nazywa się wywodzi się z nazwy macierzystej porfina